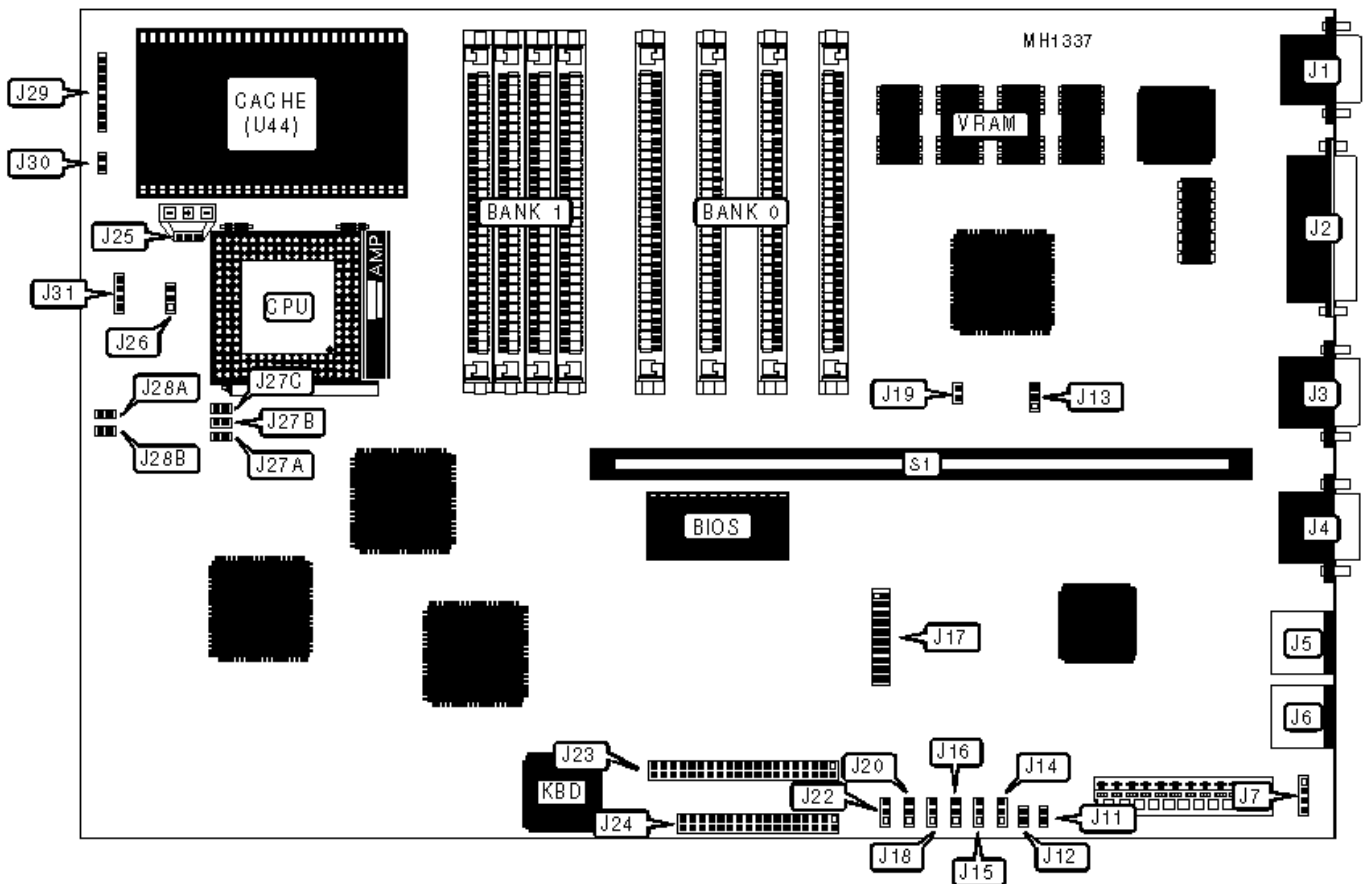


# PACKARD BELL

## PB22/23

<b>Processor</b>	80486SX/80487SX/80486DX
<b>Processor Speed</b>	20/33MHz
<b>Chip Set</b>	Intel
<b>Max. onboard DRAM</b>	32MB
<b>Cache</b>	64/128KB
<b>BIOS</b>	Phoenix
<b>Dimensions</b>	330mm x 220mm
<b>I/O Options</b>	Fax/modem daughterboard, floppy drive interface, IDE interface, multi-function connector (IDE interface LED, reset, keylock, turbo switch, turbo-LED), parallel port, PS/2 keyboard port, PS/2 mouse port, serial ports (2), VGA port
<b>NPU Options</b>	None



CONNECTIONS			
Purpose	Location	Purpose	Location
VGA connector	J1	IDE interface	J23

Parallel port	J2	Floppy drive interface	J24
Serial port 1	J3	Fan power connector (+12 VDC)	J25
Serial port 2	J4	Multi-function connector	J29
PS/2 mouse connector	J5	Keylock	J30
PS/2 keyboard connector	J6	Speaker	J31
External battery	J7	Riser card	S1
Proprietary fax/modem daughterboard	J17		

<b>USER CONFIGURABLE SETTINGS</b>			
<b>Function</b>		<b>Jumper/Switch</b>	<b>Position</b>
»	Modem enabled	J11	Closed
	Modem disabled	J11	Open
»	PS/2 mouse enabled	J12	Closed
	PS/2 mouse disabled	J12	Open
»	IDE interface address select primary	J20	pins 1 & 2 closed
	IDE interface address select secondary	J20	pins 2 & 3 closed
»	Floppy drive interface address select primary	J22	pins 1 & 2 closed
	Floppy drive interface address select secondary	J22	pins 2 & 3 closed
»	Onboard speaker enabled	J26	pins 1 & 2 closed
	Onboard speaker disabled	J26	pins 2 & 3 closed

<b>DRAM CONFIGURATION</b>		
<b>Size</b>	<b>Bank 0</b>	<b>Bank 1</b>
1MB	(4) 256K x 9	NONE

2MB	(4) 256K x 9	(4) 256K x 9
4MB	(4) 1M x 9	NONE
5MB	(4) 1M x 9	(4) 256K x 9
8MB	(4) 1M x 9	(4) 1M x 9
16MB	(4) 4M x 9	NONE
17MB	(4) 4M x 9	(4) 256K x 9
20MB	(4) 4M x 9	(4) 1M x 9
32MB	(4) 4M x 9	(4) 4M x 9

VIDEO CONFIGURATION			
Onboard VGA	Monitor Type	J13	J19
Enabled	Interlaced	pins 1 & 2 closed	Closed
Enabled	Non-interlaced	pins 1 & 2 closed	Open
Disabled	N/A	pins 2 & 3 closed	N/A

SERIAL PORT CONFIGURATION					
Port 1 (J3)	Port 2 (J4)	Modem (J17)	J11	J14	J15
COM1	COM2	Disabled	Open	pins 1 & 2	pins 1 & 2
COM1	COM4	Disabled	Open	pins 1 & 2	pins 2 & 3
COM3	COM2	Disabled	Open	pins 2 & 3	pins 1 & 2
COM3	COM4	Disabled	Open	pins 2 & 3	pins 2 & 3
Disabled	COM2	COM1	Closed	N/A	pins 1 & 2
Disabled	COM4	COM1	Closed	N/A	pins 2 & 3

Note:Pins designated should be in the closed position.

PARALLEL PORT CONFIGURATION				
	LPT	IRQ	J16	J18
»	LPT1	IRQ7	pins 1 & 2 closed	pins 1 & 2 closed
	LPT1	IRQ5	pins 1 & 2 closed	pins 2 & 3 closed
	LPT2	IRQ7	pins 2 & 3 closed	pins 1 & 2 closed
	LPT2	IRQ5	pins 2 & 3 closed	pins 2 & 3 closed

CPU TYPE CONFIGURATION			
CPU	J27A	J27B	J27C
80486SX	Open	Closed	Open
80487SX	Open	Open	Closed
80486DX	Closed	Open	Open

CACHE CONFIGURATION			
Size	Cache Socket (U44)	J28A	J28B
None	None	Open	Closed
64KB	Intel 485MA	Closed	Open
128KB	Intel 485MB	Closed	Open
128KB	PB Cache	Closed	Open