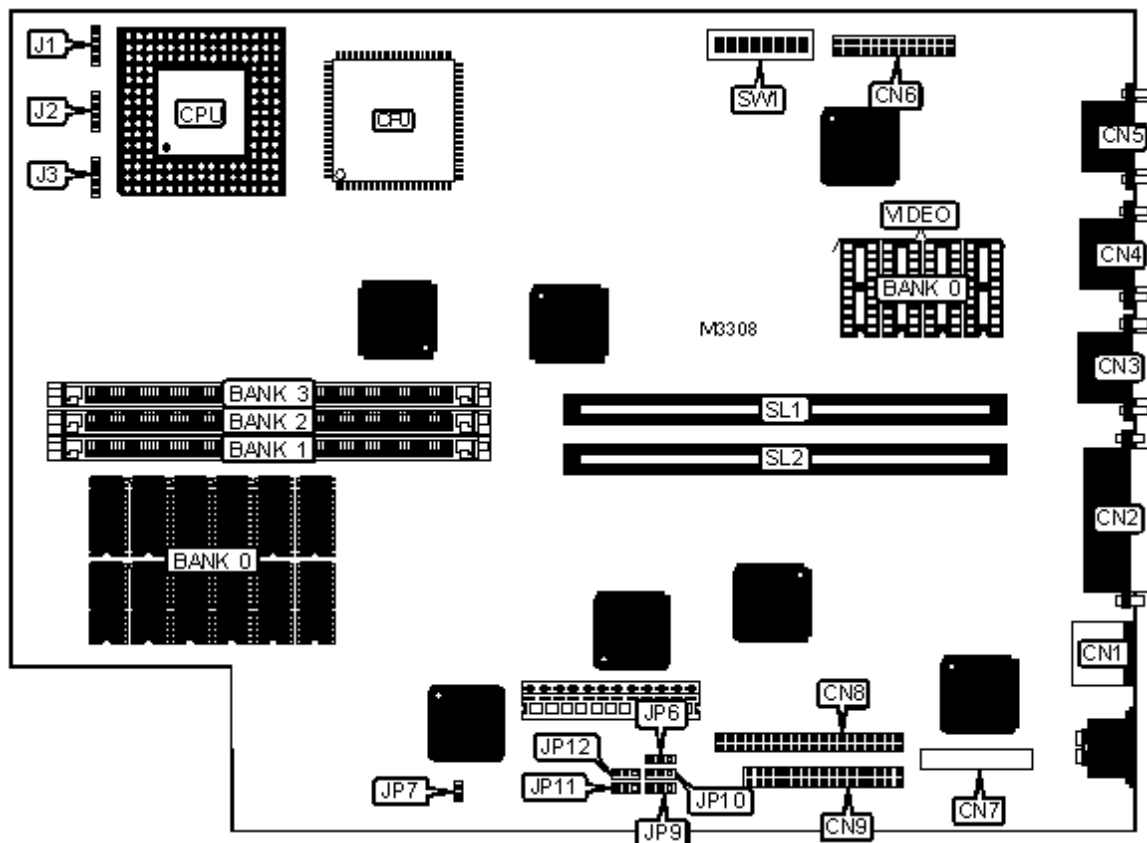


OLIVETTI

M6-420/440/450/460/ (BA200X)

Processor	80486SX/80487SX/80486DX/80486DX2/P24T
Processor Speed	25/33/50(internal)/66(internal)MHz
Chip Set	Unidentified
Maximum Onboard Memory	100MB
Cache	256KB
BIOS	Unidentified
Dimensions	330mm x 218mm
I/O Options	Floppy drive interface, IDE interface, parallel port, PS/2 mouse port, serial ports (2), VGA feature connector, VGA port, cache slot, riser slot, audio board connector
NPU Options	None



CONNECTIONS

Function	Label	Function	Label
PS/2 mouse port	CN1	Floppy drive interface	CN9
Parallel port	CN2	Chassis fan power	J1
Serial port 1	CN3	Speaker	J2
Serial port 2	CN4	External battery	J3
VGA port	CN5	Reset switch	JP7
VGA feature connector	CN6	Cache slot	SL1
Audio board connector	CN7	Riser slot	SL2
IDE interface	CN8		
Note: The location of pin 1 on the connectors is unidentified.			

USER CONFIGURABLE SETTINGS			
Setting		Label	Position
»	CMOS memory normal operation	JP6	Open
	CMOS memory clear	JP6	Pins 2 & 3 closed
	System normal operation	JP7	Open
	System reset	JP7	Closed
»	87311/12 address select 398 - 399	SW1/1	Off

	87311/12 address select 26E - 26F	SW1/1	On
»	Setup access enabled	SW1/2	Off
	Setup access disabled	SW1/2	On
»	Bootstrap from serial port enabled	SW1/3	Off
	Bootstrap from serial port disabled	SW1/3	On
»	Flash BIOS write disabled	SW1/4	Off
	Flash BIOS write enabled	SW1/4	On
»	Floppy drive write enabled	SW1/5	Off
	Floppy drive write disabled	SW1/5	On
»	RAMDAC write enabled	SW1/6	Off
	RAMDAC write disabled	SW1/6	On
	On board video enabled	SW1/7	Off
	On board video disabled	SW1/7	On

Note: The location of pin 1 on SW1 is unidentified.

DRAM				
Size	Bank 0	Bank 1	Bank 2	Bank 3
4MB	4MB	None	None	None
8MB	4MB	(1) 1M x 36	None	None

12MB	4MB	(1) 2M x 36	None	None
12MB	4MB	(1) 1M x 36	(1) 1M x 36	None
16MB	4MB	(1) 2M x 36	(1) 1M x 36	None
16MB	4MB	(1) 1M x 36	(1) 1M x 36	(1) 1M x 36
16MB	4MB	(1) 1M x 36	(1) 2M x 36	None
20MB	4MB	(1) 4M x 36	None	None
20MB	4MB	(1) 2M x 36	(1) 1M x 36	(1) 1M x 36

DRAM (CON'T)				
Size	Bank 0	Bank 1	Bank 2	Bank 3
20MB	4MB	(1) 2M x 36	(1) 2M x 36	None
24MB	4MB	(1) 4M x 36	(1) 1M x 36	None
24MB	4MB	(1) 1M x 36	(1) 2M x 36	(1) 2M x 36
24MB	4MB	(1) 1M x 36	(1) 4M x 36	None
28MB	4MB	(1) 4M x 36	(1) 1M x 36	(1) 1M x 36
28MB	4MB	(1) 4M x 36	(1) 2M x 36	None
28MB	4MB	(1) 2M x 36	(1) 2M x 36	(1) 2M x 36
28MB	4MB	(1) 2M x 36	(1) 4M x 36	None
36MB	4MB	(1) 8M x 36	None	None

36MB	4MB	(1) 4M x 36	(1) 2M x 36	(1) 2M x 36
36MB	4MB	(1) 4M x 36	(1) 4M x 36	None
40MB	4MB	(1) 8M x 36	(1) 1M x 36	None
40MB	4MB	(1) 1M x 36	(1) 4M x 36	(1) 4M x 36
40MB	4MB	(1) 1M x 36	(1) 8M x 36	None
44MB	4MB	(1) 8M x 36	(1) 1M x 36	(1) 1M x 36
44MB	4MB	(1) 8M x 36	(1) 2M x 36	None
44MB	4MB	(1) 2M x 36	(1) 4M x 36	(1) 4M x 36
44MB	4MB	(1) 2M x 36	(1) 8M x 36	None
52MB	4MB	(1) 8M x 36	(1) 2M x 36	(1) 2M x 36
52MB	4MB	(1) 8M x 36	(1) 4M x 36	None
52MB	4MB	(1) 4M x 36	(1) 4M x 36	(1) 4M x 36
52MB	4MB	(1) 4M x 36	(1) 8M x 36	None
70MB	4MB	(1) 8M x 36	(1) 4M x 36	(1) 4M x 36
70MB	4MB	(1) 8M x 36	(1) 8M x 36	None
72MB	4MB	(1) 1M x 36	(1) 8M x 36	(1) 8M x 36
76MB	4MB	(1) 2M x 36	(1) 8M x 36	(1) 8M x 36
84MB	4MB	(1) 4M x 36	(1) 8M x 36	(1) 8M x 36

100MB	4MB	(1) 8M x 36	(1) 8M x 36	(1) 8M x 36
Note: Bank 0 is factory installed and is not configurable.				

CACHE SIZE	
Size	SL1
256KB	Installed

CPU SPEED	
Setting	SW1/8
25MHz	Off
33MHz	On
50iMHz	Off
66iMHz	On

DMA CHANNEL				
Setting	JP9	JP10	JP11	JP12
DMA0	Pins 1 & 2 closed	N/A	Pins 1 & 2 closed	N/A
DMA1	N/A	Pins 1 & 2 closed	N/A	Pins 1 & 2 closed
DMA5	Pins 2 & 3 closed	N/A	Pins 2 & 3 closed	N/A

VIDEO MEMORY	
Size	Bank 0
None	None
1MB	(4) 256K x 8