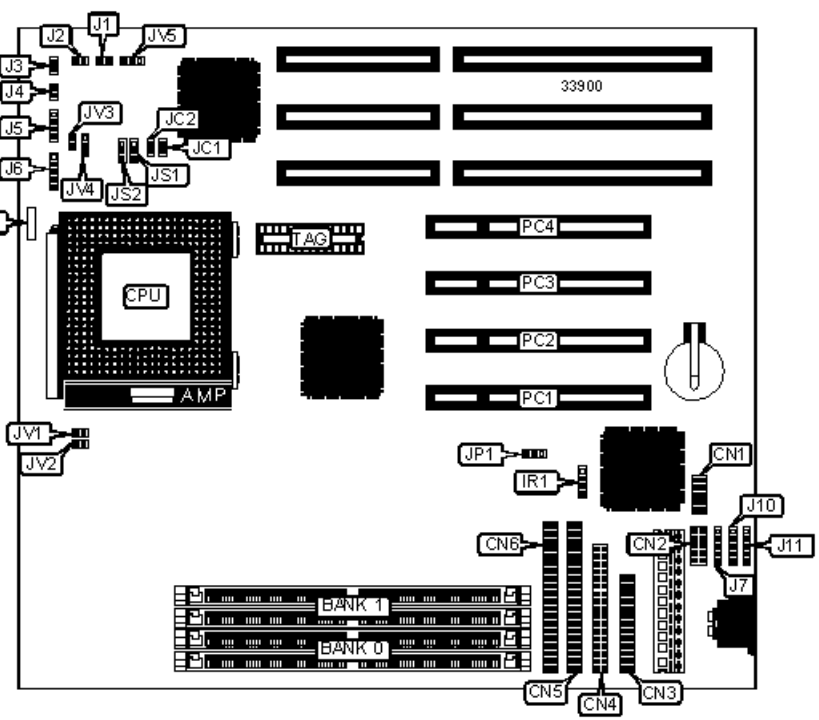


QDI COMPUTER, INC.

P5I430VX-250 EXPLORER

| | |
|-------------------------------|---|
| Processor | CX M1/AM K5/Pentium |
| Processor Speed | 75/90/100/120/133/150/166/180/200MHz |
| Chip Set | Intel |
| Video Chip Set | None |
| Maximum Onboard Memory | 128MB (EDO supported) |
| Maximum Video Memory | None |
| Cache | 256/512KB |
| BIOS | Award |
| Dimensions | 250mm x 220mm |
| I/O Options | 32-bit PCI slots (4), floppy drive interface, green PC connector, IDE interfaces (2), parallel port, PS/2 mouse interface, serial ports (2), IR connector, USB connectors (2) |
| NPU Options | None |



| CONNECTIONS | | | |
|------------------------|----------|---------------------|----------|
| Purpose | Location | Purpose | Location |
| Serial port 2 | CN1 | Reset switch | J3 |
| Serial port 1 | CN2 | Turbo LED | J4 |
| Parallel port | CN3 | Speaker | J5 |
| Floppy drive interface | CN4 | Power LED & keylock | J6 |

| | | | |
|--------------------|-----|----------------------|-----------|
| IDE interface 2 | CN5 | PS/2 mouse interface | J7 |
| IDE interface 1 | CN6 | Chassis fan power | J8 |
| IR connector | IR1 | USB connector 1 | J10 |
| Green PC connector | J1 | USB connector 2 | J11 |
| IDE interface LED | J2 | 32-bit PCI slots | PC1 - PC4 |

USER CONFIGURABLE SETTINGS

| Function | | Label | Position |
|----------|------------------------------|-------|-------------------|
| » | CMOS memory normal operation | JP1 | Pins 1 & 2 closed |
| | CMOS memory clear | JP1 | Pins 2 & 3 closed |

DRAM CONFIGURATION

| Size | Bank 0 | Bank 1 |
|------|-------------|-------------|
| 8MB | (2) 1M x 36 | None |
| 16MB | (2) 2M x 36 | None |
| 16MB | (2) 1M x 36 | (2) 1M x 36 |
| 24MB | (2) 2M x 36 | (2) 1M x 36 |
| 32MB | (2) 4M x 36 | None |
| 32MB | (2) 2M x 36 | (2) 2M x 36 |
| 40MB | (2) 4M x 36 | (2) 1M x 36 |
| 48MB | (2) 4M x 36 | (2) 2M x 36 |
| 64MB | (2) 8M x 36 | None |
| 64MB | (2) 4M x 36 | (2) 4M x 36 |
| 72MB | (2) 8M x 36 | (2) 1M x 36 |
| 80MB | (2) 8M x 36 | (2) 2M x 36 |
| 96MB | (2) 8M x 36 | (2) 4M x 36 |

128MB

(2) 8M x 36

(2) 8M x 36

Note: Board accepts EDO memory. Board also accepts x 32 SIMMs.

CACHE CONFIGURATION

| Size | Bank 0 | TAG |
|-------|--------------|--------------|
| 256KB | (2) 32K x 32 | Unidentified |
| 512KB | (2) 64K x 32 | Unidentified |

Note: The location of bank 0 is unidentified.

CPU SPEED SELECTION (CYRIX)

| CPU speed | Clock speed | Multiplier | JC1 | JC2 | JS1 | JS2 |
|-----------|-------------|------------|--------|--------|-------|-------|
| 120MHz | 50MHz | 2x | Closed | Closed | 2 & 3 | 1 & 2 |
| 133MHz | 55MHz | 2x | Open | Open | 2 & 3 | 1 & 2 |
| 150MHz | 60MHz | 2x | Closed | Open | 2 & 3 | 1 & 2 |
| 166MHz | 66MHz | 2x | Open | Closed | 2 & 3 | 1 & 2 |

Note: Pins designated should be in the closed position.

CPU SPEED SELECTION (AMD)

| CPU speed | Clock speed | Multiplier | JC1 | JC2 | JS1 | JS2 |
|-----------|-------------|------------|--------|--------|-------|-------|
| 75MHz | 50MHz | 1.5x | Closed | Closed | 2 & 3 | 2 & 3 |
| 90MHz | 55MHz | 1.5x | Open | Open | 2 & 3 | 2 & 3 |
| 90MHz | 60MHz | 1.5x | Closed | Open | 2 & 3 | 2 & 3 |
| 100MHz | 66MHz | 1.5x | Open | Closed | 2 & 3 | 2 & 3 |

Note: Pins designated should be in the closed position.

CPU SPEED SELECTION (INTEL)

| CPU speed | Clock speed | Multiplier | JC1 | JC2 | JS1 | JS2 |
|-----------|-------------|------------|-----|-----|-----|-----|
|-----------|-------------|------------|-----|-----|-----|-----|

| | | | | | | |
|--------|-------|------|--------|--------|-------|-------|
| 75MHz | 50MHz | 1.5x | Closed | Closed | 2 & 3 | 2 & 3 |
| 90MHz | 60MHz | 1.5x | Closed | Open | 2 & 3 | 2 & 3 |
| 100MHz | 66MHz | 1.5x | Open | Closed | 2 & 3 | 2 & 3 |
| 120MHz | 60MHz | 2x | Closed | Open | 2 & 3 | 1 & 2 |
| 133MHz | 66MHz | 2x | Open | Closed | 2 & 3 | 1 & 2 |
| 150MHz | 60MHz | 2.5x | Closed | Open | 1 & 2 | 1 & 2 |
| 166MHz | 66MHz | 2.5x | Open | Closed | 1 & 2 | 1 & 2 |
| 180MHz | 60MHz | 3x | Closed | Open | 1 & 2 | 2 & 3 |
| 200MHz | 66MHz | 3x | Open | Closed | 1 & 2 | 2 & 3 |

Note: Pins designated should be in the closed position.

CPU VOLTAGE SELECTION (SINGLE)

| Voltage | JV1 | JV2 | JV3 | JV4 | JV5 |
|---------|--------|--------|--------|-------|-----|
| 3.3v | Closed | Closed | Open | 1 & 2 | N/A |
| 3.5v | Closed | Closed | Closed | 1 & 2 | N/A |

Note: Pins designated should be in the closed position.

CPU VOLTAGE SELECTION (DUAL)

| I/O voltage | V core | JV1 | JV2 | JV3 | JV4 | JV5 |
|-------------|--------|------|------|--------|-------|-------|
| 3.3v | 2.5 | Open | Open | Open | 2 & 3 | Open |
| 3.3v | 2.7 | Open | Open | Open | 2 & 3 | 1 & 2 |
| 3.3v | 2.9 | Open | Open | Open | 2 & 3 | 2 & 3 |
| 3.5v | 2.5 | Open | Open | Closed | 2 & 3 | Open |
| 3.5v | 2.7 | Open | Open | Closed | 2 & 3 | 2 & 3 |
| 3.5v | 2.9 | Open | Open | Closed | 2 & 3 | 2 & 3 |

Note: Pins designated should be in the closed position.

