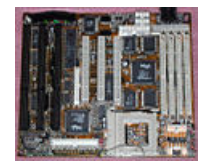


JAMICON Motherboard KM-T5-V Rev 3.0

I have made a local copy of this page in case another ISP decides to go haywire. The original page can be found [HERE](#), and is owned by [Magus Man](#).

Note: all images are clickable and will give you an enlarged picture.



You can set clock and voltage jumpers for different CPUs according to jumper setting identified on the back of the board or in the tables below.



Summary Tables

CPU VCC Select

JP11	JP12	JP14	JP15	JP16	CPU VCC
1-2	1-2	1-2	1-3, 2-4	1-3, 2-4	3.3V (Default)
1-2	1-2	2-3	1-3, 2-4	1-3, 2-4	3.45V
2-3	1-2	1-2	1-2, 3-4	1-2, 3-4	3.3V & 2.5V
2-3	2-3	1-2	1-2, 3-4	1-2, 3-4	3.3V & 2.7V
2-3	4-5	1-2	1-2, 3-4	1-2, 3-4	3.3V & 2.9V
2-3	1-2	2-3	1-2, 3-4	1-2, 3-4	3.45V & 2.5V
2-3	2-3	2-3	1-2, 3-4	1-2, 3-4	3.45V & 2.7V
2-3	4-5	2-3	1-2, 3-4	1-2, 3-4	3.45V & 2.9V

JP12

(V)Core

1-2	2.5V
2-3	2.7V
4-5	2.9V

JP14 (V)I/O

1-2	3.3V
2-3	3.45V

Dual Voltage CPU

JP11	JP15	JP16
2-3	1-2, 3-4	1-2, 3-4

Note: In the dual voltage configuration JP15 and JP16 are not necessary. They can be removed entirely.

Single Voltage CPU

JP11	JP15	JP16
1-2	1-3, 2-4	1-3, 2-4

Orientation:



CPU Speed Select

JP4	Ext Clock Speed Rev 3.0	Ext Clock Speed Rev 3.1
1-2, 3-4	50Mhz	50Mhz
3-4	55 Mhz	66Mhz (Default)
1-2	60Mhz	60Mhz
	66Mhz (Default)	55Mhz

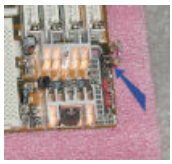
CPU Clock Multiplier

JP13	Clock Multiplier
1-2, 3-4	2.5X

3-4	3X
1-2	2X
	1.5X (3.5X for 233Mhz)

As a special side note, someone managed to get AMD K6 processors with 2.2 Vcore to run on this board. This modification doesn't come without risk. It was noticed the voltage regulator gets VERY HOT. As a result, it is not known how reliable this modification will be. Therefore, if you try it, it's **at your own risk**.

1. First, you need to make a jumper with a resistance of 25 to 40 Ohms. 40 Ohms will result in 2.17V, and 25 Ohms will result in 2.27V. This jumper is placed across JP12. This effectively drops the 2.5V default of this jumper setting down to a value the K6 can use. See the 25 Ohms (10 + 15 Ohm, .5 Watt) resistor used in the following illustration.

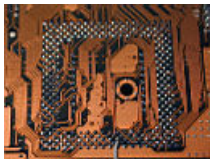


2. To use the higher multiplier settings the K6 will require, you'll need to make a long grounding jumper for pin W-35 of your CPU. This pin when grounded allows for multipliers 4X and higher.

CPU Clock Multiplier

JP13	Clock Multiplier W/Pin W-35 Grounded
1-2, 3-4	4.5X
3-4	5X
1-2	4X
	5.5X

The long jumper was soldered to CPU pin W-35 on the back of the board.



From here it's just a matter of finding a grounding pin to use. You can use the one that is used here, or the one identified for your CPU fan. (Note: The pin that has been jumpered has been marked for reference.)



Once the modifications have been made, the board should boot up fine. The BIOS of course will not correctly identify the CPU but the system will still work at it's proper speed.

If you have any questions, please drop **Magus Man** a line as he owns this board and has done this trick:

Magusman@fcmail.com