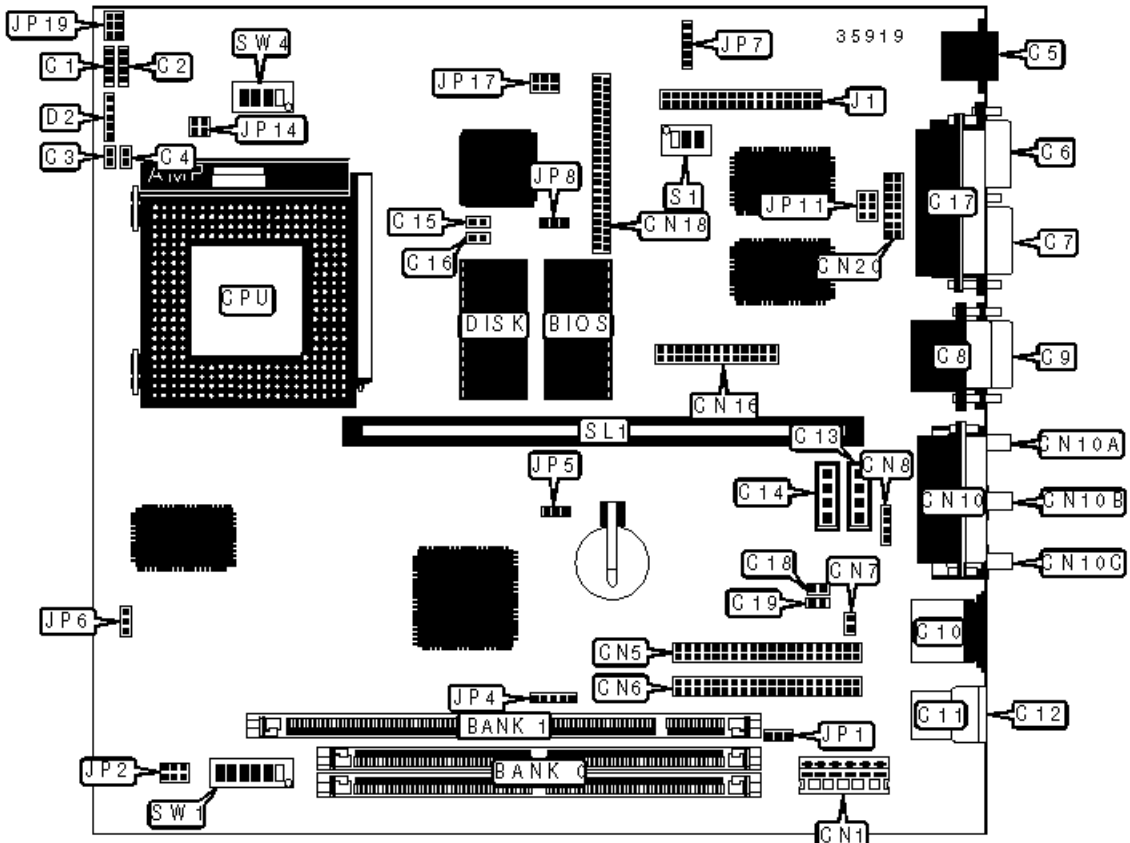


AAEON TECHNOLOGY, INC.

MB-562

Device Type	Mainboard
Processor	CX 6X86/IBM 6X86/SGS 6X86/CX MII/AM K5/AM K6/Pentium/ Pentium MMX
Processor Speed	75/90/100/120/133/150/166/200/233/266/300MHz
Chip Set	SIS 5582
Video Chip Set	Chips and Technology
Maximum Onboard Memory	128MB (EDO & SDRAM supported)
Maximum Video Memory	2MB
Cache	512KB
BIOS	Award
Dimensions	225mm x 220mm
I/O Options	Ethernet 10BaseT connector, floppy drive interface, game/MIDI port, IDE interfaces (2), parallel port, PS/2 mouse port, serial ports (2), VGA port, riser slot, IR connector, USB connectors (2), line in, line out, microphone in, audio in – CD-ROMs (2)



CONNECTIONS			
Purpose	Location	Purpose	Location
Speaker	C1	Volume up	C19

IR connector	C2	Power LED & keylock	D2
Reset switch	C3	Power connector	CN1
IDE interface LED	C4	IDE interface	CN5
Ethernet 10BaseT connector	C5	IDE interface	CN6
VGA port	C6	Modem connector	CN7
Serial port 2	C7	Line out	CN8
Serial port 3	C8	Game/MIDI port	CN10
Serial port 1	C9	Microphone in	CN10A
PS/2 mouse port	C10	Line in	CN10B
USB connector 1	C11	Line out	CN10C
USB connector 2	C12	Parallel port	CN16
Audio in – CD-ROM (Panasonic)	C13	LCD connector	CN18
Audio in – CD-ROM (Sony)	C14	Serial port	CN20
Link LED	C15	Floppy drive interface	J1
RX LED	C16	GPIO connector	JP4
Parallel port	C17	LCD backlight connector	JP7
Volume down	C18	Riser slot	SL1

USER CONFIGURABLE SETTINGS

Function		Label	Position
»	On board video enabled	JP2	Pins 2 & 4, 3 & 5 closed
	On board video disabled	JP2	Pins 1 & 3, 4 & 6 closed
»	CMOS memory normal operation	JP5	Pins 1 & 2 closed
	CMOS memory clear	JP5	Pins 2 & 3 closed
»	PCI clock select 1/2 CPU clock	JP6	Pins 2 & 3 closed

	PCI clock select 32MHz	JP6	Pins 1 & 2 closed
»	LCD signal select SHF CLK from C & T 65550	JP8	Pins 1 & 2 closed
	LCD signal select ASHF CLK from SHF CLK	JP8	Pins 2 & 3 closed
»	LCD panel voltage select 5v	JP17	Pins 3 & 5, 4 & 6 closed
	LCD panel voltage select 3.3v	JP17	Pins 1 & 3, 2 & 4 closed

SIMM CONFIGURATION	
Size	Bank 0
8MB	(2) 1M x 36
16MB	(2) 2M x 36
32MB	(2) 4M x 36
64MB	(2) 8M x 36
128MB	(2) 16M x 36
Note: Board accepts EDO memory.	

DIMM CONFIGURATION	
Size	Bank 1
8MB	(1) 1M x 64
16MB	(1) 2M x 64
32MB	(1) 4M x 64
64MB	(1) 8M x 64
128MB	(1) 16M x 64
Note: Board accepts SDRAM memory.	

SIMM VOLTAGE CONFIGURATION	
Voltage	JP1

	3.3v	Pins 2 & 3 closed
»	5v	Pins 1 & 2 closed

CACHE CONFIGURATION

Note: The location of the cache is unidentified.

VIDEO MEMORY CONFIGURATION

Note: The location of the video memory is unidentified.

CPU SPEED SELECTION (SGS 6X86)								
CPU speed	Clock speed	Multiplier	SWA/1	SWA/2	SWA/3	SWA/4	SWA/5	SWA/6
120MHz	50MHz	2x	On	On	On	Off	Off	On
133MHz	55MHz	2x	On	On	Off	Off	Off	On
150MHz	60MHz	2x	Off	On	On	Off	Off	On
166MHz	66MHz	2x	On	Off	On	Off	Off	On

CPU SPEED SELECTION (IBM 6X86)								
CPU speed	Clock speed	Multiplier	SWA/1	SWA/2	SWA/3	SWA/4	SWA/5	SWA/6
120MHz	50MHz	2x	On	On	On	Off	Off	On
133MHz	55MHz	2x	On	On	Off	Off	Off	On
150MHz	60MHz	2x	Off	On	On	Off	Off	On
166MHz	66MHz	2x	On	Off	On	Off	Off	On

CPU SPEED SELECTION (CX 6X86)								
CPU speed	Clock speed	Multiplier	SWA/1	SWA/2	SWA/3	SWA/4	SWA/5	SWA/6
120MHz	50MHz	2x	On	On	On	Off	Off	On
133MHz	55MHz	2x	On	On	Off	Off	Off	On
150MHz	60MHz	2x	Off	On	On	Off	Off	On

166MHz	66MHz	2x	On	Off	On	Off	Off	On
--------	-------	----	----	-----	----	-----	-----	----

CPU SPEED SELECTION (CX MII)

CPU speed	Clock speed	Multiplier	SWA/1	SWA/2	SWA/3	SWA/4	SWA/5	SWA/6
233MHz	66MHz	3.5x	On	Off	On	Off	Off	Off
266MHz	66MHz	4x	On	Off	On	On	Off	On
300MHz	66MHz	4.5x	On	Off	On	On	On	On

CPU SPEED SELECTION (AM K5)

CPU speed	Clock speed	Multiplier	SWA/1	SWA/2	SWA/3	SWA/4	SWA/5	SWA/6
75MHz	50MHz	1.5x	On	On	On	Off	Off	Off
90MHz	60MHz	1.5x	Off	On	On	Off	Off	Off
100MHz	66MHz	1.5x	On	Off	On	Off	Off	Off
120MHz	60MHz	2x	Off	On	On	Off	Off	On
133MHz	66MHz	2x	On	Off	On	Off	Off	On
150MHz	60MHz	2.5x	Off	On	On	Off	On	On
166MHz	66MHz	2.5x	On	Off	On	Off	On	On

CPU SPEED SELECTION (AM K6)

CPU speed	Clock speed	Multiplier	SWA/1	SWA/2	SWA/3	SWA/4	SWA/5	SWA/6
166MHz	66MHz	2.5x	On	Off	On	Off	On	On
200MHz	66MHz	3x	On	Off	On	Off	On	Off
233MHz	66MHz	3.5x	On	Off	On	Off	Off	Off
266MHz	66MHz	4x	On	Off	On	On	Off	On
300MHz	66MHz	4.5x	On	Off	On	On	On	On

CPU SPEED SELECTION (INTEL)

CPU speed	Clock speed	Multiplier	SWA/1	SWA/2	SWA/3	SWA/4	SWA/5	SWA/6
75MHz	50MHz	1.5x	On	On	On	Off	Off	Off
90MHz	60MHz	1.5x	Off	On	On	Off	Off	Off
100MHz	66MHz	1.5x	On	Off	On	Off	Off	Off
120MHz	60MHz	2x	Off	On	On	Off	Off	On
133MHz	66MHz	2x	On	Off	On	Off	Off	On
150MHz	60MHz	2.5x	Off	On	On	Off	On	On
166MHz	66MHz	2.5x	On	Off	On	Off	On	On
200MHz	66MHz	3x	On	Off	On	Off	On	Off

CPU SPEED SELECTION (INTEL MMX)

CPU speed	Clock speed	Multiplier	SWA/1	SWA/2	SWA/3	SWA/4	SWA/5	SWA/6
166MHz	66MHz	2.5x	On	Off	On	Off	On	On
200MHz	66MHz	3x	On	Off	On	Off	On	Off
233MHz	66MHz	3.5x	On	Off	On	Off	Off	Off

CPU TYPE SELECTION

Type	JP14
Single voltage	Pins 1 & 2, 3 & 4 closed
» Dual voltage	Open

CPU VOLTAGE SELECTION

Voltage	SW4/1	SW4/2	SW4/3	SW4/4
2.2v	Off	Off	On	Off
2.5v	Off	On	Off	On
2.7v	Off	On	On	On

»	2.8v	On	Off	Off	Off
	2.9v	On	Off	Off	On
	3.1v	On	Off	On	On
	3.2v	On	On	Off	Off
	3.4v	On	On	On	Off
	3.5v	On	On	On	On

DISK ADDRESS SELECTION

Setting		S1/1	S1/2	S1/3
	CC00	Off	Off	Off
»	D000	Off	Off	On
	D400	Off	On	Off
	D800	Off	On	On
	DC00	On	Off	Off

SERIAL PORT 2 SELECTION

Setting		JP11
»	RS-232	Pins 1 & 2 closed
	RS-422	Pins 3 & 4 closed
	RS-485	Pins 5 & 6 closed

SERIAL PORT 2/IR PORT SELECTION

Setting		JP19
»	COM2	Pins 1 & 3, 2 & 4 closed
	IR	Pins 3 & 5, 4 & 6 closed